

SPECIFIC RULES FOR THE SAFETY AND SECURITY OF ALL CHILDREN

- Children to remain in the school grounds during school hours
- No child will be in school before **8.45am** unless attending Breakfast Club
- All children in Reception and K.S.1 will be collected at the end of the day by a named adult
- The Adventure Playground to be used at designated times only
- Jewellery should not be worn for P.E. or swimming and should not be brought to school
- Fizzy drinks and chewing gum should not be brought to school
- Children staying for an after-school clubs must make arrangements with parents about going home after clubs.
- Parents must inform the school office if your child is **not** attending an after-school club for any reason other than illness

If you have concerns always contact us on 01455 842138



Our Behaviour Policy November 2010

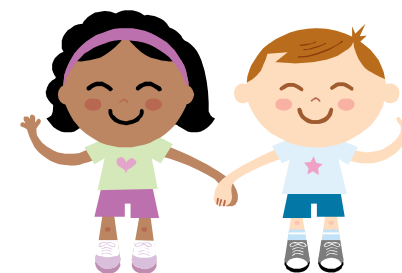


In this school we aim to provide a safe, secure and happy environment for all the people who enter it.

Good behaviour enables teacher to teach and children to learn. It gives us a safe place for everyone.

What do we want?

- ❖ Respect for ourselves & each other
- ❖ Self-control
- ❖ Politeness
- ❖ Care for our school environment
- ❖ Feeling safe
- ❖ Responsibility
- ❖ To do our best in everything



STAFF are expected to:

- Reinforce all good behaviours
- Provide opportunities for children to express their concerns
- Set high standards
- Value pupil's achievements, praising and rewarding good work and behaviour
- Keep parents and governors well informed in all matters regarding issues of behaviour
- Display our school rules in the classroom

STAFF should expect to:

- Be kept informed and involved in decision-making
- Be treated with respect and politeness by other people
- Have behaviour guidelines followed
- Be supported by the headteacher

In the first instance following a warning your child may receive:

- A green form for lunchtime or playtime issues
- A pink form for problems in the classroom

The teacher dealing with the incident will set a suitable sanction.

If your child receives 3 forms in any half term parents will be informed.

RECORD KEEPING

As in all schools, the headteacher will keep a record of all offences involving:

- Proven bullying
- Aggressive behaviour
- Violence of any kind
- Rudeness or insolence towards adults
- Failure to carry out adult's reasonable instructions
- All incidents of racism/sexism

All incidences deemed to be serious will be carefully dealt with by the headteacher and **parents informed**.

There may be times when children with Special Educational Needs will need Individual Education Plans (IEPs) to help monitor and improve behaviour, home and school will share such targets.

- Suspension from school for a fixed period
- Permanent Exclusion according to L.A. guidelines

UNACCEPTABLE BEHAVIOUR

We all need to be quite clear about what we feel is unacceptable behaviour.

Parents, children, staff and governors regard the following types of behaviour as unacceptable:

- Fighting
- Biting, pinching or spitting
- Injury to others
- Bad language
- Shouting verbal abuse
- Refusal to follow instructions
- Bullying
- Bad manners
- Racism
- Sexism
- Homophobia
- Wilful damage to school and personal property
- Introducing harmful substances or unsuitable materials to school premises
- Persistent failure to meet school's expectations

CHILDREN are expected to:

- Arrive and leave school on time
- Be responsible for their own belongings
- Have the correct equipment and kit needed for school
- Walk quietly & sensibly around school
- Participate in all learning activities
- Respect their own and others work
- Help in the care of the school and its property
- Listen to others and respect their opinions
- Be kind to one another
- Follow our Golden Rules

CHILDREN should expect to:

- Be treated fairly and be listened to
- Be praised and rewarded for effort and achievements
- Know what sanctions will be applied for bad behaviour

ENCOURAGING GOOD BEHAVIOUR

All staff encourage and reinforce positive behaviour and achievement in all pupils.

OUR REWARDS

- Verbal praise
- Written comments on a child's piece of work
- Sharing with the class
- Displaying work
- Sharing with other staff
- Stickers and class points
- Aces and certificates in celebration assemblies
- Class Golden Time
- Ace folders
- Lunchtime rewards
- Showing and sharing with the headteacher
- Informal sharing with parents
- Parent's evenings and Annual Report
- Texts about achievements

We all like to do well and these ideas will promote our the positive caring ethos of our school.

MANAGING UNWANTED BEHAVIOUR

Nobody is perfect and there will be times when a minority of pupils break our GOLDEN RULES to the extent that sanctions are required. Staff will always use their own judgements and sanctions will be tailored to meet the particular problem, liaising with parents if appropriate

OUR SANCTIONS

When a child first misbehaves:

- Encourage the child to improve his/her attitude through a class or home/school behaviour log
- A change of seat in the classroom or dining hall
- Re-doing careless work
- Verbal warning
- 'Time-Out' A temporary withdrawal from the class
- Loss of playtime/s
- Green and pink forms
- Visit to headteacher
- Parents informed by letter/phone or personally if possible
- Letter sent to the Chair of Governors